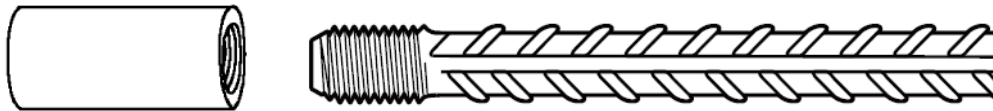


Multiple Piece Tie Bar System

The ‘FABco Tie Bar System’ provides an efficient and economical method of splicing rebar using threaded bar and a coupler. Also known as ‘dowel bar replacements’, ‘FABco Tie Bar Systems’ are used at construction and contraction joints per DOT plans and specifications. ‘FABco Tie Bars’ are used in lieu of costly traditional splices at joints when concrete is not poured monolithically.

First Pour Instructions: Place “female piece” (piece attached to coupler) into initial pour of concrete using contractor-supplied bar supports. Position the end of the coupler towards the field assembled joint edge so that concrete does not impede the female opening. It is also important to note that the FABco provided plastic insert is to remain in the female end throughout the first pour.

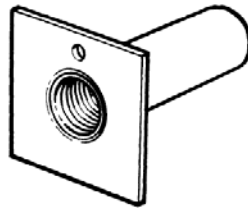
Second Pour Instructions: Once field assembled edge joint is removed, pull the plastic plug from the female coupler already embedded into concrete. Insert “male piece” (rebar with threaded end) by screwing into coupler. Product will meet specifications by “hand assembly”; no mechanical equipment is needed to unite female and male ends.



ASTM A-615 Grade 60 Reinforcing Bar Data							
Reinforcing Bar Size	Reinforcing Bar Area	Minimum Yield (lbs.)	Minimum Ultimate (lbs.)	Thread Data	Thread Tensile Area (in ²)	125% f _y Minimum Requirement (lbs.)	Minimum Ultimate Tensile Stress (psi)
#4 [#13]	0.20	12,000	18,000	1/2" - 13 UN	0.1419	15,000	105,708
#5 [#16]	0.31	18,600	27,900	5/8" - 11 UN	0.2260	23,250	102,876
#6 [#19]	0.44	26,400	39,600	3/4" - 10 UN	0.3340	33,000	98,802
#7 [#22]	0.60	36,000	54,000	7/8" - 9 UN	0.4620	45,000	97,403
#8 [25]	0.79	47,400	71,100	1" - 8 UN	0.6060	59,250	97,772
#9 [#29]	1.00	60,000	90,000	1-1/8" - 8 UN	0.7900	75,000	94,937
#10 [#32]	1.27	76,200	114,300	1-1/4" - 8 UN	1.0000	95,250	95,250
#11 [#36]	1.56	93,600	140,400	1-3/8" - 8 UN	1.2330	75,000	94,891
#14 [#43]	2.25	135,000	202,500	1-5/8" 8 UN	1.7800	168,750	94,803

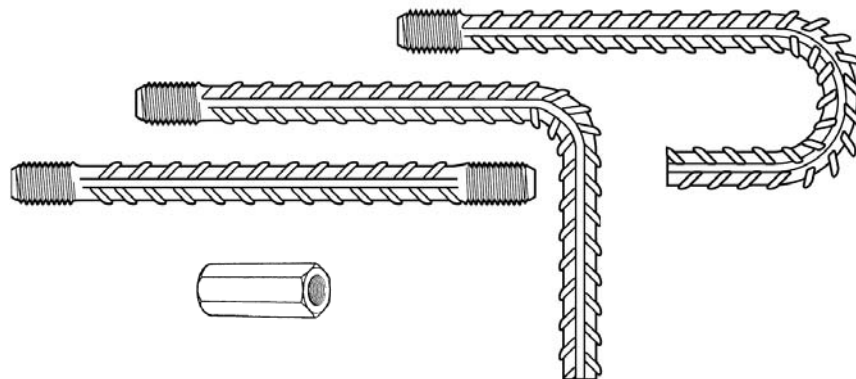
Form Saving System

The 'FABco Form Saver Coupler' utilizes the same technology as the 'FABco Tie Bar System'. However, the coupler is fabricated with a 2"x2"x1/4" flange. The flange contains holes which allow for simple fastening to a full range of forming material using screws or nails. The "FABco Form Saving System" prevents costly damage to rented forms, installs in seconds, and offers a simple alternative to drilling holes for rebar splices.



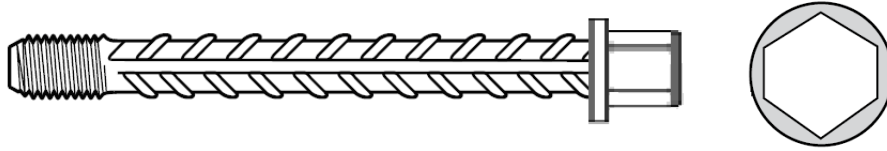
Fabricated Bar System

FABco manufactures coupler systems to the customer's specifications and needs. Straight, hooked, angled, or double threaded; FABco will manufacture the system to meet all development requirements. Our standard dimensions are based on CRSI specifications.



Terminal Anchor System

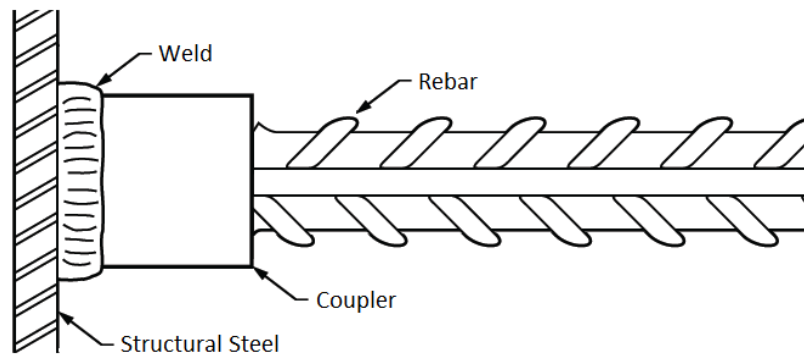
The FABco Terminal Anchor System is the standard threaded system with a nut threaded to one end for anchoring purposes. The use of this design is for areas where a standard female end cannot be placed. The typical substituted product would be a corner or hook system. Where those will not fit due to situational congestion, we created the Terminal Anchor System to fulfill CRSI's development length. Lengths and sizes are available upon request.



Terminal Anchor System					
Reinforcing Bar Size	Ultimate Strength (lbs.)	Thread Data	Head Data		Minimum Length
			Washer Diameter	Head Thickness	
#4 [#13]	18,000	1/2" - 13 UN	1-3/16"	7/16"	6"
#5 [#16]	27,900	5/8" - 11 UN	1-3/16"	7/16"	6"
#6 [#19]	39,600	3/4" - 10 UN	1-1/2"	7/16"	6"
#7 [#22]	54,000	7/8" - 9 UN	1-3/4"	9/16"	6"
#8 [25]	71,100	1" - 8 UN	1-3/4"	9/16"	10"
#9 [#29]	90,000	1-1/8" - 8 UN	2-1/8"	3/4"	10"
#10 [#32]	114,300	1-1/4" - 8 UN	2-1/4"	3/4"	12"
#11 [#36]	140,400	1-3/8" - 8 UN	2-1/2"	7/8"	12"

Welding Coupler System

FABco also offers couplers made from grade 1018 steel designed to weld directly to structural metals. The coupler has a 20° chamfer to accommodate welding. Welds can be made on the jobsite using good welding practices.



Please feel free to contact us with any questions, comments, or concerns. We pride ourselves in being flexible to accommodate any of our customers needs in a timely and economically competitive manner.

Provided with all of our products is material certification and test reports.